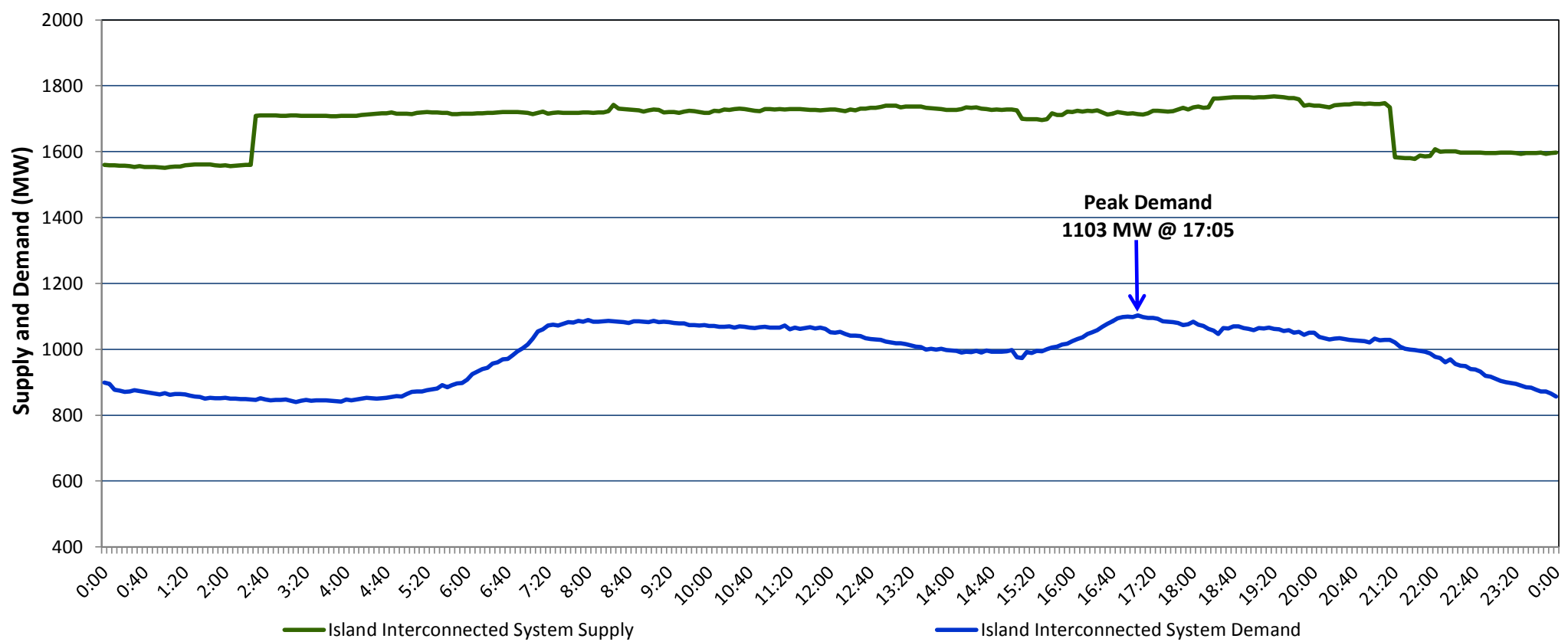


**Newfoundland Labrador Hydro (NLH)
Supply and Demand Status Report Filed Tuesday, November 21, 2017**

**Section 1
Island Interconnected System Supply and Demand
Actual 24 Hour System Performance For Monday, November 20, 2017**



Supply Notes For November 20, 2017

- 1,2
- A As of 1510 hours, November 04, 2017, Bay d'Espoir Unit 1 unavailable (76.5 MW).
 - B As of 1510 hours, November 04, 2017, Bay d'Espoir Unit 2 unavailable (76.5 MW).
 - C As of 0939 hours, November 08, 2017, Stephenville Gas Turbine available at 25 MW (50 MW).
 - D As of 0012 hours, November 16, 2017, Holyrood Unit 1 available at 145 MW (170 MW).
 - E At 0227 hours, November 20, 2017, Holyrood Unit 3 available at full capacity (150 MW).
 - F At 1817 hours, November 20, 2017, Hardwoods Gas Turbine available at 25 MW (50 MW).
 - G At 2115 hours, November 20, 2017, Holyrood Unit 2 unavailable due to planned outage 150 MW (170 MW).

**Section 2
Island Interconnected Supply and Demand**

Tue, Nov 21, 2017	Island System Outlook ³	Seven-Day Forecast	Temperature (°C)		Island System Daily Peak Demand (MW)	
			Morning	Evening	Forecast	Adjusted ⁷
Available Island System Supply: ⁵	1,565 MW	Tuesday, November 21, 2017	2	0	1,335	1,239
NLH Generation: ⁴	1,295 MW	Wednesday, November 22, 2017	0	0	1,300	1,205
NLH Power Purchases: ⁶	105 MW	Thursday, November 23, 2017	4	6	1,180	1,086
Other Island Generation:	165 MW	Friday, November 24, 2017	3	1	1,285	1,190
Current St. John's Temperature:	1 °C	Saturday, November 25, 2017	-3	2	1,305	1,210
Current St. John's Windchill:	N/A °C	Sunday, November 26, 2017	4	8	1,300	1,205
7-Day Island Peak Demand Forecast:	1,335 MW	Monday, November 27, 2017	7	13	1,170	1,076

Supply Notes For November 21, 2017

- 3
- Notes:
1. Generation outages for running and corrective maintenance are included. These are not unusual for power system operations. They generally do not impact customer supply. The power system operators schedule outages to system equipment whenever possible to coincide with periods when customer demands are low and sufficient supply reserves are available. However, from time to time equipment outages are necessary and reserves may be impacted.
 2. Due to the Island Interconnected System being isolated from the larger North American grid, when there is a sudden loss of large generating units some customer's load must be interrupted for short periods to bring generation output equal to customer demand. This automatic action of power system protection, referred to as under frequency load shedding, is necessary to ensure the integrity and reliability of system equipment. Under frequency events typically occur 5 to 8 times per year on the Island Interconnected System and the resultant customer load interruptions are generally less than 30 minutes.
 3. As of 0800 Hours.
 4. Gross output including station service at Holyrood (24.5 MW) and improved NLH hydraulic output due to water levels (35 MW).
 5. Gross output from all Island sources (including Note 4).
 6. NLH Power Purchases include: CBPP Co-Gen, Nalcor Exploits, Rattle Brook, Star Lake, Vale capacity assistance (when applicable), and Wind Generation.
 7. Adjusted for CBP&P interruptible load and the impact of voltage reduction, when applicable.

**Section 3
Island Peak Demand Information
Previous Day Actual Peak and Current Day Forecast Peak**

Mon, Nov 20, 2017	Actual Island Peak Demand ⁸	17:05	1,103 MW
Tue, Nov 21, 2017	Forecast Island Peak Demand		1,335 MW

- Notes: 8. Island Demand is supplied by NLH generation and purchases, plus generation owned and operated by Newfoundland Power and Corner Brook Pulp & Paper (Deer Lake Power, DLP).